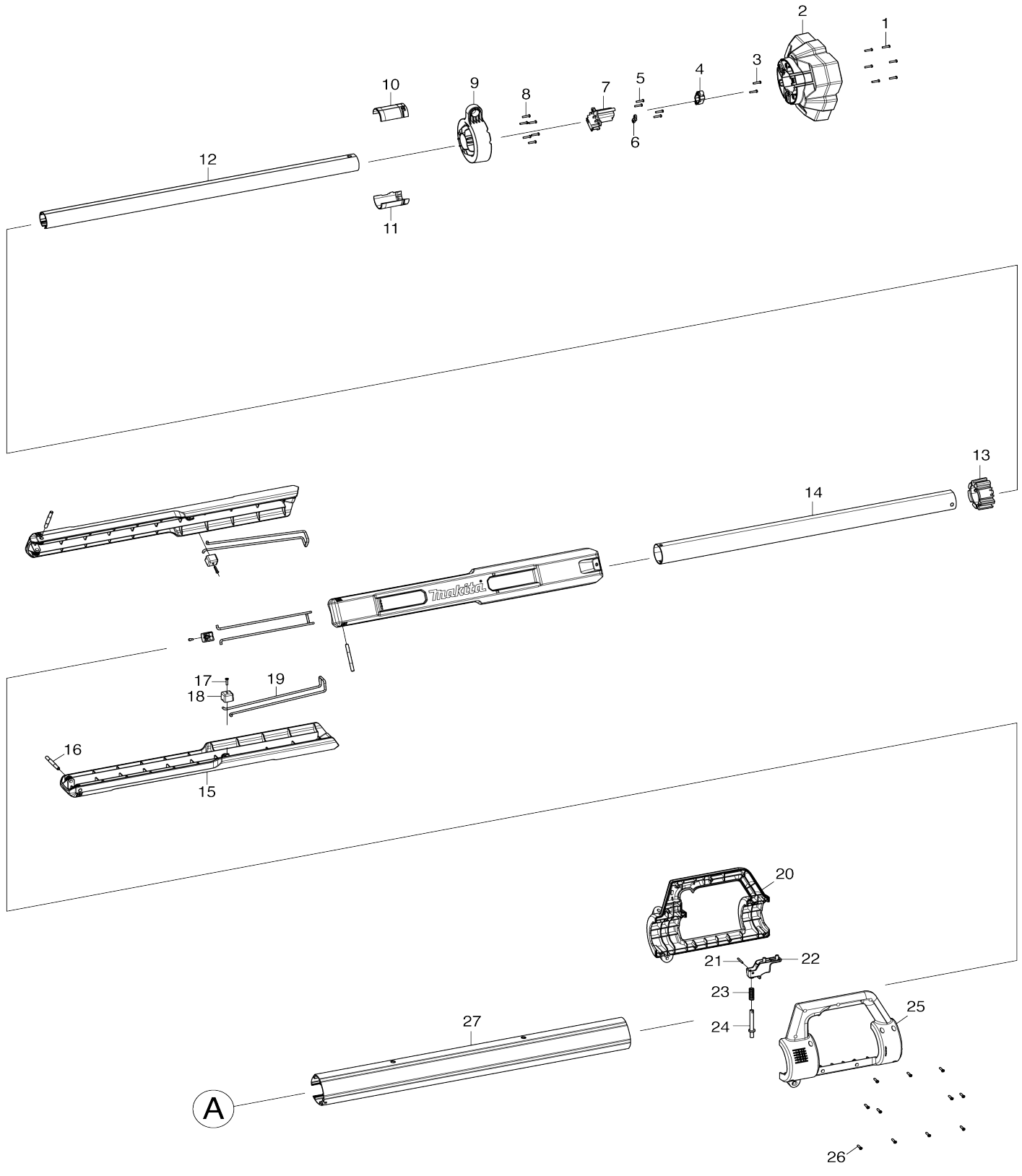
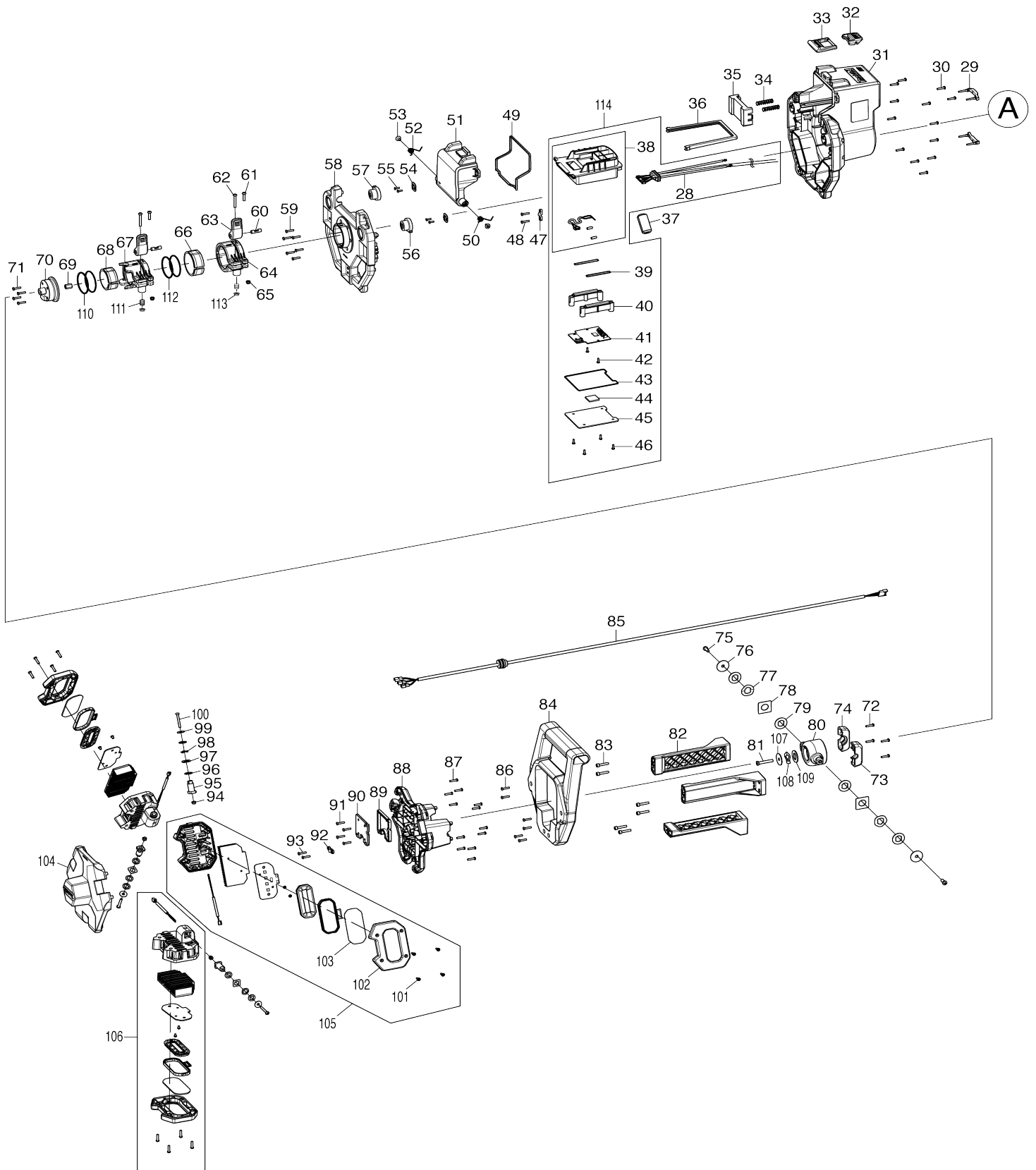


Model No.DML814 CORDLESS WORKLIGHT



Model No.DML814 CORDLESS WORKLIGHT



Model No.DML814 CORDLESS WORKLIGHT

Item No.	Parts No.	Description	Interchangability	Q'ty	New/Old	Note1	Note2
001	TD00000015	TAPPING SCREW PB3.5X14		6			
002	TD00000016	REAR BASE		1			
003	TD00000015	TAPPING SCREW PB3.5X14		2			
004	TD00000017	CABLE COVER		1			
005	TD00000015	TAPPING SCREW PB3.5X14		4			
006	TD00000018	CORD CLAMP		1			
007	TD00000019	REAR FOOT L		1			
008	TD00000015	TAPPING SCREW PB3.5X14		6			
009	TD00000020	FRONT BASE		1			
010	TD00000021	SLEEVE R		1			
011	TD00000022	SLEEVE L		1			
012	TD00000023	POLE B		1			
013	TD00000024	POLE SLEEVE		1			
014	TD00000025	POLE A		1			
015	TD00000026	LEG		3			
016	TD00000027	PIN		3			
017	TD00000015	TAPPING SCREW PB3.5X14		3			
018	TD00000028	CHECK BLOCK		3			
019	TD00000029	LINK		3			
020	TD00000109	HANDLE SET		1			
D10		INC. 25					
021	TD00000031	PIN		1			
022	TD00000032	RELEASE BUTTON		1			
023	TD00000033	SPRING		1			
024	TD00000034	LATCH		1			
025	TD00000109	HANDLE SET		1			
D10		INC. 20					
026	TD00000015	TAPPING SCREW PB3.5X14		11			
027	TD00000036	BODY		1			
028	TD00000037	CABLE		1			
029	TD00000038	RUBBER PAD		2			
030	TD00000015	TAPPING SCREW PB3.5X14		13			
031	TD00000039	BATTERY HOUSING		1			
032	TD00000040	LATCH		1			
033	TD00000041	CLIP		1			
034	TD00000042	SPRING		2			
035	TD00000043	PUSH PLATE		1			
036	TD00000044	GASKET		1			
037	TD00000045	MAGNET RING		1			
038	TD00000046	PCBA BOX COMPLETE		1			
039	TD00000047	GASKET		2			
040	TD00000048	DUST COVER		2			
041	TD00000049	MAIN BOARD		1			
042	TD00000050	TAPPING SCREW PB3X8		2			
043	TD00000051	GASKET		1			
044	TD00000052	SILICON SHEET		1			
045	TD00000053	HEATSINK		1			

046	TD00000050	TAPPING SCREW PB3X8	4		
047	TD00000018	CORD CLAMP	1		
048	TD00000015	TAPPING SCREW PB3.5X14	2		
049	TD00000054	GASKET	1		
050	TD00000055	TORSION SPRING	1		
051	TD00000056	BATTERY COVER	1		
052	TD00000057	TORSION SPRING	1		
053	TD00000058	TAPPING SCREW PWB3X8	2		
054	TD00000059	KEY PCBA	2		
055	TD00000050	TAPPING SCREW PB3X8	4		
056	TD00000060	POWER KEY	1		
057	TD00000061	MODE KEY	1		
058	TD00000062	HOUSING COVER	1		
059	TD00000015	TAPPING SCREW PB3.5X14	6		
060	TD00000138	PIN	2		
061	TD00000064	SCREW PM4.0X16	2		
062	TD00000136	SCREW PM4.0X38	2		
063	TD00000066	CLAMP	2		
064	TD00000134	POLE CLAMP A	1		
065	TD00000068	NUT M4	2		
066	TD00000132	BUSH A	1		
067	TD00000135	POLE CLAMP B	1		
068	TD00000133	BUSH B	1		
069	TD00000072	NUT M5	1		
070	TD00000073	POLE COVER	1		
071	TD00000015	TAPPING SCREW PB3.5X14	4		
072	TD00000015	TAPPING SCREW PB3.5X14	4		
073	TD00000074	SHAFT COVER R	1		
074	TD00000075	SHAFT COVER L	1		
075	TD00000076	SCREW PW5.0X12	2		
076	TD00000077	FLAT WASHER	2		
077	TD00000078	SPRING WASHER	2		
078	TD00000079	SQUARE WASHER	2		
079	TD00000080	FLAT WASHER	4		
080	TD00000081	BASE	1		
081	TD00000082	SCREW PM5.0X30	1		
082	TD00000083	HANDLE SUPPORTER	3		
083	TD00000084	TAPPING SCREW CB4.0X20	6		
084	TD00000085	HANDLE	1		
085	TD00000095	LED CABLE B	1		
086	TD00000015	TAPPING SCREW PB3.5X14	6		
087	TD00000015	TAPPING SCREW PB3.5X14	12		
088	TD00000096	LAMP HOUSING	1		
089	TD00000097	GASKET	1		
090	TD00000098	COVER	1		
091	TD00000015	TAPPING SCREW PB3.5X14	4		
092	TD00000018	CORD CLAMP	1		
093	TD00000015	TAPPING SCREW PB3.5X14	2		
094	TD00000068	NUT M4	3		
095	TD00000099	SHAFT	3		
096	TD00000100	FLAT WASHER	6		
097	TD00000101	SQUARE WASHER	3		

098	TD00000102	SPRING WASHER		3		
099	TD00000103	FLAT WASHER		3		
100	TD00000065	SCREW PM4X28		3		
101	TD00000015	TAPPING SCREW PB3.5X14		4		
102	TD00000104	LED COVER		1		
103	TD00000105	LENS		1		
104	TD00000106	FRONT HOUSING		1		
105	TD00000107	LED ASSEMBLY		2		
D10		INC. 101-103				
106	TD00000108	LED ASSEMBLY B		1		
D10		INC. 101-103				
107	TD00000077	FLAT WASHER		1		
108	TD00000078	SPRING WASHER		1		
109	TD00000080	FLAT WASHER		1		
110	TD00000141	RING		2		
111	TD00000139	SPRING		2		
112	TD00000140	RING		2		
113	TD00000137	LOCK NUT		2		
114	TD00000094	MAIN BOARD ASSEMBLY		1		
D10		INC. 28,38-46				
A01	TD00000001	TOOL BAG		1		
A02	TD00000002	SHOULDER BELT		1		

Please state Parts No. when your order.

Print Date 24/10/2023